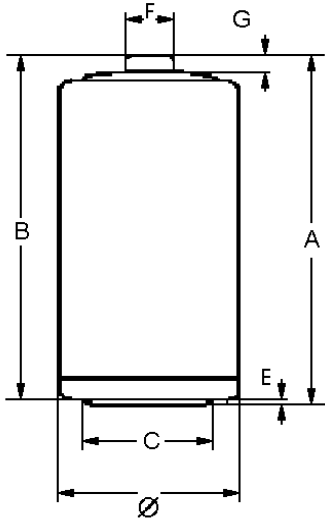


Data Sheet

Recommended Application: Universal

4020

Type Designation	4020
Designation IEC	LR20
System	Zn-MnO ₂ (Alkaline)
Shelf Life (Coding)*	5 years
Nominal Voltage [V]	1.5
Typical Capacity C [mAh]	15000 (discharge with high-resistance)
Permissible Temperature Range	- 10 °C ... 50 °C
Weight, approx. [g]	127
Volume [ccm]	51



Dimensions [mm]	min:	max:
Ø	32.3	34.2
A	-	61.5
B	59.5	-
C	18.0	-
E	-	1.0
F	-	9.5
G	1.5	-

Typical Capacities (at 20°C)

Discharge Type	Load	End Voltage[V]	1.0	0.9
4M/H,8H/D,7D/W	2.2 Ω	Time [m]	1025	1347
Portable Lightings		Capacity [Ah]	9,20	11,6
		Energy [Wh]	10,8	13,3
Discharge Type	Load	End Voltage[V]	0.9	0.8
1H/D,7D/W	2.2 Ω	Time [h]	20,4	26,5
Toys		Capacity [Ah]	11,0	12,6
		Energy [Wh]	12,1	13,4
Discharge Type	Load	End Voltage[V]	1.0	0.9
2 H/D,7D/W	600 mA	Time [h]	9,5	12,3
Portable stereo		Capacity [mAh]	5711	7936
		Energy [Wh]	6542	8706
Discharge Type	Load	End Voltage[V]	1.0	0.9
4H/D,7D/W	10 Ω	Time [h]	109	121
Transistor Radios		Capacity [Ah]	13,4	14,5
		Energy [Wh]	16,5	17,7

No publication or circulation of data to third parties without consent of VARTA Consumer Batteries

* In consideration of typical loss of capacity at storage and application.